



0.5mm Pitch 2.0H Flip-Lock ZIF

FPC 0.5 Series

FEATURES & BENEFITS:

The product is widely used in AV, Digital devices, Cameras, Automobile AV, TV, Calculators, Cash registers, Telephones, MP3, mp4, CD-ROM, VCD, DVD, Copiers, Printers, Scanners, Notebook computers, Wireless instrumentation, Disc devices and Space ships and etc.

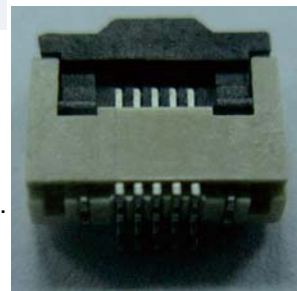
SPECIFICATION:

★ Electrical:

- Voltage: 50V AC Max.
- Current Rating: 0.4A DC Max.
- Contact Resistance: 20 mΩ Max.
- Insulation Resistance: 100MΩ Min.
- Dielectric Strength: 200V AC (rms) for 1 minute

★ Mechanical:

- Contact Retention Force: 0.08 kgf Min.
- FPC/FFC Retention Force: 0.04 kgf Min.



REFERENCE INFORMATION:

- The kind of connector has its pitch 0.5, and can be divided into 4~50 screens type. Moreover, it features high density, small volume and easy use.
- Package: Pipe package or roll package
- Designed in: mm/inch

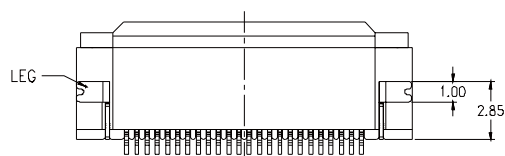
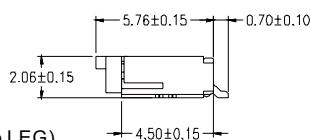
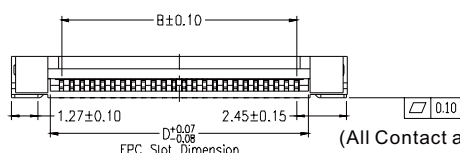
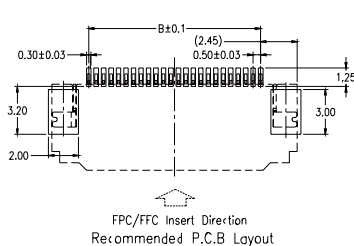
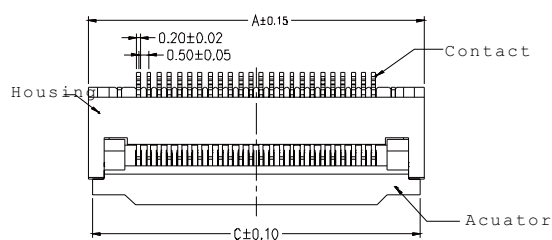
★ Physical:

- Housing: LCP UL94V-0 white
- Actuator: LCP UL94V-0 black
- Contact: Phosphor Bronze Gold or Tin plated on Ni over All
- LEG: Brass Matte Tin plated on Nickel over all
- Operating Temperature: -25°C ~ +85°C

ORDERING INFORMATION AND DIMENSIONS:

Part NO.:

F 05 20 -15 * * HF
 無鹵素
 方向性 1=下接式
 類型 F=翻蓋式
 Pin
 High=2.00mm
 Pitch=0.50mm



NO. of Contacts	Dimension			
	A	B	C	D
04	6.40	1.50	6.00	2.60
05	6.90	2.00	6.50	3.10
06	7.40	2.50	7.00	3.60
07	7.90	3.00	7.50	4.10
08	8.50	3.50	8.00	4.60
09	8.90	4.00	8.50	5.10
10	9.40	4.50	9.00	5.60
11	9.90	5.00	9.50	6.10
12	10.40	5.50	10.00	6.60
13	10.90	6.00	10.50	7.10
14	11.40	6.50	11.00	7.60
15	11.90	7.00	11.50	8.10
16	12.40	7.50	12.00	8.60
17	12.90	8.00	12.50	9.10
18	13.40	8.50	13.00	9.60
19	13.90	9.00	13.50	10.10
20	14.40	9.50	14.00	10.60
21	14.90	10.00	14.50	11.10
22	15.40	10.50	15.00	11.60
23	15.90	11.00	15.50	12.10
24	16.40	11.50	16.00	12.60
25	16.90	12.00	16.50	13.10
26	17.40	12.50	17.00	13.60
27	17.90	13.00	17.50	14.10
28	18.40	13.50	18.00	14.60
29	18.90	14.00	18.50	15.10
30	19.40	14.50	19.00	15.60
31	19.90	15.00	19.50	16.10
32	20.40	15.50	20.00	16.60

NO. of Contacts	Dimension			
	A	B	C	D
33	20.90	16.00	20.50	17.10
34	21.40	16.50	21.00	17.60
35	21.90	17.00	21.50	18.10
36	22.40	17.50	22.00	18.60
37	22.90	18.00	22.50	19.10
38	23.40	18.50	23.00	19.60
39	23.90	19.00	23.50	20.10
40	24.40	19.50	24.00	20.60
41	24.90	20.00	24.50	21.10
42	25.40	20.50	25.00	21.60
43	25.90	21.00	25.50	22.10
44	26.40	21.50	26.00	22.60
45	26.90	22.00	26.50	23.10
46	27.40	22.50	27.00	23.60
47	27.90	23.00	27.50	24.10
48	28.40	23.50	28.00	24.60
49	28.90	24.00	28.50	25.10
50	29.40	24.50	29.00	25.60
51	29.90	25.00	29.50	26.10
52	30.40	25.50	30.00	26.60
53	30.90	26.00	30.50	27.10
54	31.40	26.50	31.00	27.60
55	31.90	27.00	31.50	28.10
56	32.40	27.50	32.00	28.60
57	32.90	28.00	32.50	29.10
58	33.40	28.50	33.00	29.60
59	33.90	29.00	33.50	30.10
60	34.40	29.50	34.00	30.60
61	34.90	30.00	34.50	31.10