

## 5.03mm Pitch

### Power Connection System

### Crimp Terminal and Housing

## 6687 Series

### FEATURES & BENEFITS:

- Passive lock
- 6 circuit housings
- Mating Bases available
- Male and Female terminals may be used in Receptacle housing
- Applicable wire size AWG 14~18

### SPECIFICATION:

#### ★ Electrical:

- Voltage: 250V DC/AC

|       |       |       |
|-------|-------|-------|
| 14AWG | 16AWG | 18AWG |
| 12A   | 10A   | 9A    |

- Contact Resistance: 10m ohm max
- Insulation Resistance: 1000M ohm min

#### ★ Mechanical:

- Contact Retention to Housing: 9.0kg min.
- Mating Force: 9.5kg max(initial)
- Unmating Force: 2.5kg min(25th)
- Durability: 30 Cycles

#### ★ Physical:

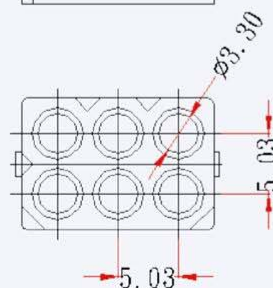
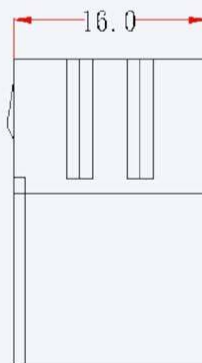
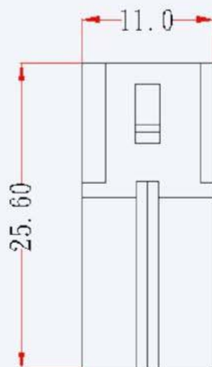
- Housing: Nylon 66, 94V-0 or 94V-2
- Contact: Phosphor Bronze or Brass
- Plating: Pre. Tin over Copper
- Temperature Range: -40°C to +105°C

### REFERENCE INFORMATION:

- Mates with YIYI T6687 Series Terminal or equivalent
- Mates with Molex Base: 10-18-1061
- Package: terminal-Reel, Housing-Bag
- Designed in : mm

### ORDERING INFORMATION AND DIMENSIONS:

#### Housing:

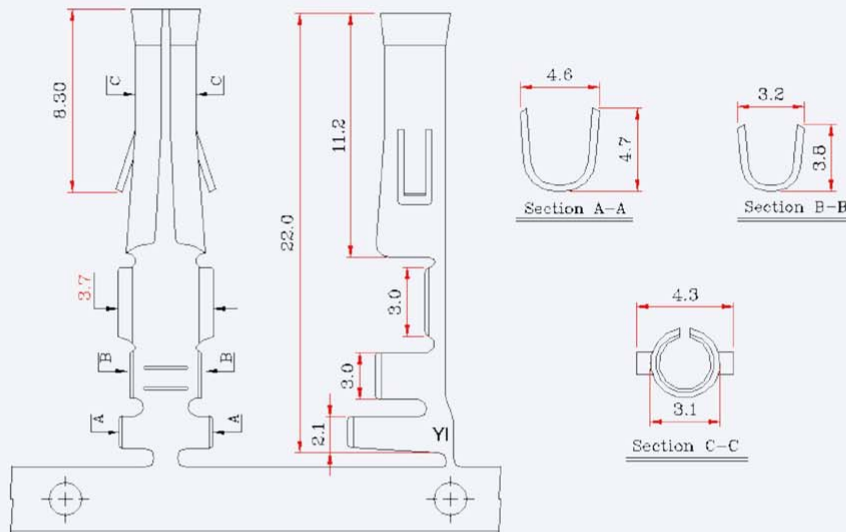


| Part No.   | Material       | Color   | Circuit |
|------------|----------------|---------|---------|
| H6687-206M | Nylon 66 94V-2 | Natural | 6       |
| H6687-006M | Nylon 66 94V-0 | White   | 6       |

**6687 Series**

**ORDERING INFORMATION AND DIMENSIONS:**

**Terminal:**



| Part No.  | Thickness | Material   | Wire Range | Insulation O.D | Finish          |
|-----------|-----------|------------|------------|----------------|-----------------|
| T6687-75F | 0.25      | Ph. Bronze | AWG#14~18  | 3.5-2.8mm      | Pre. Tin-Plated |
| T6687-35F | 0.25      | Brass      | AWG#14~18  | 3.5-2.8mm      | Pre. Tin-Plated |