



PC Board $\phi 2.4$

Crimp Terminal

$\phi 2.4$ Series

FEATURES & BENEFITS:

- Stand-Alone, Board-In
- Secures wire to PC board before wave soldering
- Rapid and economical means of hand wiring PC board
- Wire solders directly to PC board
- No additional contact resistance
- Low profile
- Recommended PC board hole diameter
 $\phi 2.4 + 0.1 / -0$ for 1.60 ± 0.1 mm thick PC board

SPECIFICATION:

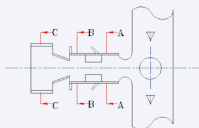
+ Physical:

- Contact: Brass or Phosphor Bronze
- Plating: Pre. Tin over Copper
Post Tin over Copper

REFERENCE INFORMATION:

- Package: Reel
- Designed in : mm

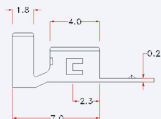
ORDERING INFORMATION AND DIMENSIONS:



A-A SECTION



B-B SECTION



C-C SECTION



P.C.B. LAYOUT

Part No.	Material	Finished	Thickness	Accept wire
T6625-35	Brass	Pre. Tin-plated	0.20	#16~20
T6625-15	Brass	Post Tin-plated		
T6625-75	Phosphor Bronze	Pre. Tin-plated		
T6625-55	Phosphor Bronze	Post Tin-plated		



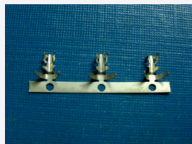
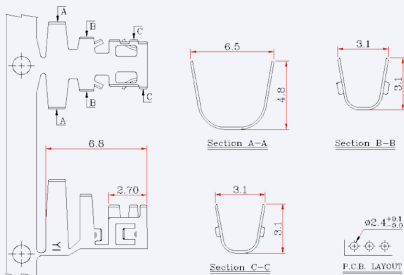


PC Board $\Phi 2.4$

Crimp Terminal

$\Phi 2.4$ Series

ORDERING INFORMATION AND DIMENSIONS:



Part No.	Material	Plated	Thickness	Wire Range
T6625-35R	Brass	Post-Tin	0.20	#14-16
T6625-75R	Phosphor Bronze	Post-Tin		#18*2