



0.5mm Pitch 1.5H Dual-Contact Non-ZIF

FPC 0.5 Series

FEATURES & BENEFITS:

The product is widely used in AV, Digital devices, Cameras, Automobile AV, TV, Calculators, Cash registers, Telephones, MP3, mp4, CD-ROM, VCD, DVD, Copiers, Printers, Scanners, Notebook computers, Wireless instrumentation, Disc devices and Space ships and etc.

SPECIFICATION:

★ Electrical:

- Voltage: 50V AC Max.
- Current Rating: 0.4A DC Max.
- Contact Resistance: 30 mΩ Max.
- Insulation Resistance: 50MΩ Min
- Dielectric Strength: 250V AC (rms) for 1 minute



★ Mechanical:

- Insertion force = 0.08kgf MAX.
- Separation force = 0.03kgf MIN.

REFERENCE INFORMATION:

- The kind of connector has its pitch 0.5, and can be divided into 4~50 screens type. Moreover, it features high density, small volume and easy use.
- Package: Pipe package or roll package
- Designed in: mm/inch

★ Physical:

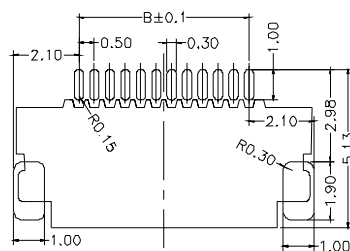
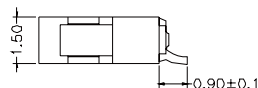
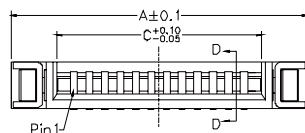
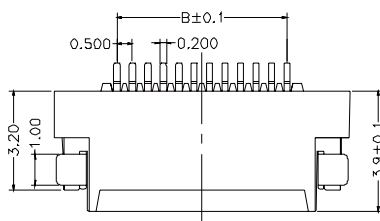
- Housing: PA 46 UL94V-0 white
- Contact: Brass Tin over Nickel
- LEG: Brass Tin over Nickel
- Operating Temperature: -55°C ~ +85°C

ORDERING INFORMATION AND DIMENSIONS:

Part NO.:

F 05 15 -06 * * HF

無鹵素
方向性 0=無方向式
類型 S=雙接觸點
Pin
High=1.50mm
Pitch=0.50mm



Recommended P.C.B Layout

P art No.	Dimension			P art No.	Dimension		
	A	B	C		A	B	C
4P	5.53	1.5	2.57	33P	20.03	16.0	17.07
5P	6.03	2.0	3.07	34P	20.53	16.5	17.57
6P	6.53	2.5	3.57	35P	21.03	17.0	18.07
7P	7.03	3.0	4.07	36P	21.53	17.5	18.57
8P	7.53	3.5	4.57	37P	22.03	18.0	19.07
9P	8.03	4.0	5.07	38P	22.53	18.5	19.57
10P	8.53	4.5	5.57	39P	23.03	19.0	20.07
11P	9.03	5.0	6.07	40P	23.53	19.5	20.57
12P	9.53	5.5	6.57	41P	24.03	20.0	21.07
13P	10.03	6.0	7.07	42P	24.53	20.5	21.57
14P	10.53	6.5	7.57	43P	25.03	21.0	22.07
15P	11.03	7.0	8.07	44P	25.53	21.5	22.57
16P	11.53	7.5	8.57	45P	26.03	22.0	23.07
17P	12.03	8.0	9.07	46P	26.53	22.5	23.57
18P	12.53	8.5	9.57	47P	27.03	23.0	24.07
19P	13.03	9.0	10.07	48P	27.53	23.5	24.57
20P	13.53	9.5	10.57	49P	28.03	24.0	25.07
21P	14.03	10.0	11.07	50P	28.53	24.5	25.57
22P	14.53	10.5	11.57	51P	29.03	25.0	26.07
23P	15.03	11.0	12.07	52P	29.53	25.5	26.57
24P	15.53	11.5	12.57	53P	30.03	26.0	27.07
25P	16.03	12.0	13.07	54P	30.53	26.5	27.57
26P	16.53	12.5	13.57	55P	31.03	27.0	28.07
27P	17.03	13.0	14.07	56P	31.53	27.5	28.57
28P	17.53	13.5	14.57	57P	32.03	28.0	29.07
29P	18.03	14.0	15.07	58P	32.53	28.5	29.57
30P	18.53	14.5	15.57	59P	33.03	29.0	30.07
31P	19.03	15.0	16.07	60P	33.53	29.5	30.57
32P	19.53	15.5	16.57				